

# Micro Robotic Solution **Zoom3D Series**



ZOOM3D

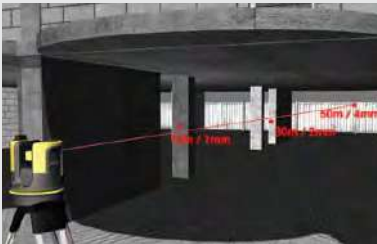
# PLUG AND PLAY SOLUTION

3D measurements have never been so easy and fast. With simple configuration and self-levelling feature, the Zoom3D will speed up your daily work indoors and outdoor.



## GET STARTED WITH THE PRESS OF TWO BUTTONS

1. Place your Zoom3D on the floor or on the tripod
2. Turn it on. The Zoom3D automatically levels
3. Connect it to your datalogger and start working!



## MILIMETRE ACCURACY

Error-free results in every working condition.



## SELF-LEVELLING

No matter where you place your Zoom3D, its self-levelling feature will level automatically and start to measure.



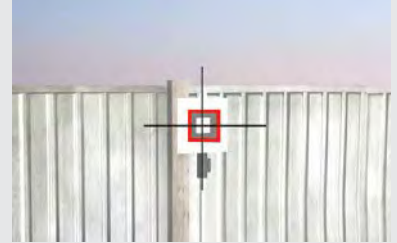
## WI-FI

Wi-Fi connection in all Windows devices up to 50 m.



### TARGET RECOGNITION

With the Zoom3D target recognition technology you can measure and stake out using a pole for all your one-man operations.



### 3D MEASURING

Press just one button to take 3D measurements. The Zoom3D software will allow you to visualise and rotate your 3D survey.



### CAMERA

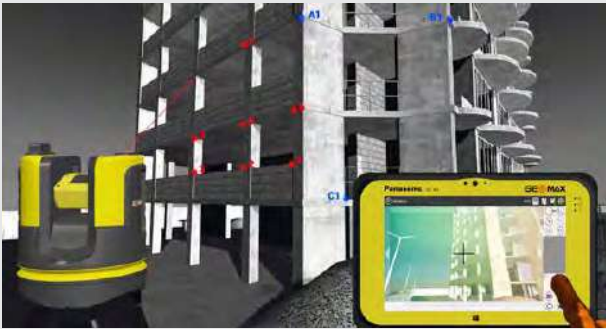
Easily aim and precisely zoom in on a point with the tablet and its 5MP camera.



# UPGRADE IT TO **MICRO ROBOTIC SOLUTION**

Save time and resources by upgrading your Zoom3D to a Micro Robotic Solution for all your one-man operations. Its powerful software is equipped with a target recognition technology, automatically aiming and tracking the target mounted on a standard TPS pole. The Zoom3D is the ideal partner for all daily tasks in any small construction site for all daily tasks, from as-built survey to the stake out.





### AS-BUILT

Thanks to the Zoom3D's drawing function quickly and easily measure and draw the 3D environment, and then export the result in DXF format.



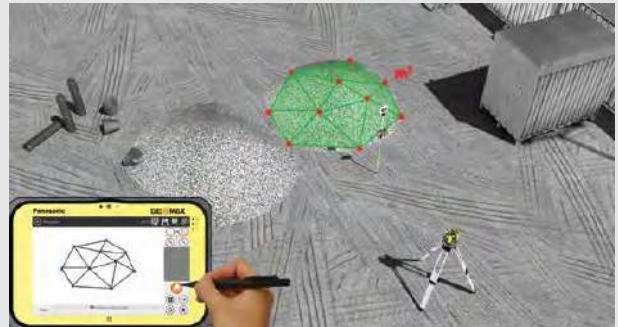
### JOB SITE CHECKS

Ideal for all daily construction site tasks. The software includes a full set of tools to check distances, slopes, angles, directly in the construction site.



### AREA

In real time measure and draw a surface to know directly in the field what is a specific area.



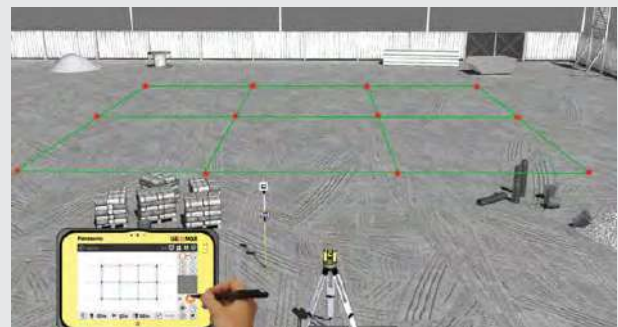
### VOLUME

X-PAD Zoom3D enables you to calculate a volume and the cut/fill portions, directly in the field.



### CHECK PLANES

Using the pole with the target you can easily calculate the distance from the pole and a horizontal or sloped reference plane.



### LAYOUT

X-PAD Zoom3D includes an easy-to-use but powerful stake out tool for the site layout. Using the target you can stake out with only one operator.

# YOUR PERFECT PARTNER FOR INTERIOR SOLUTIONS

Easy levelling, plumbing points and staking out - the Zoom3D unique and user-friendly onboard software comes with a full set of features that will speed up your interior applications.

Get fast and exact results can be easily exported in the most common data format and all at the best-price-to-performance.





### AUTO MEASURE

Aim precisely to an edge or a corner. Place the instrument nearby and X-PAD 3D automatically measure the exact point.



### DRAWING TOOLS

Quickly draw 2D and 3D elements with the best results using the X-PAD 3D full range of drawing tools.



### LINE SCAN

Zoom3D automatically measures horizontally, vertically and sloped sections.



### SURFACE

Define the boundaries and the Zoom3D automatically measures to a defined step on the surface you have defined.



### PLUMBING

Measuring plumbing points with the Zoom 3D has never been so easy.



### LEVELLING

Forget about spirit levels and measuring tapes Zoom3D will level and transfer the measurement from wall to wall.

# Zoom3D Series

## GONIOMETER

Measurement range	Horizontal 360°; vertical 250°
Accuracy	5", equates to 1.2 mm @ 50 m

## LASER DISTANCE METER

Type	Coaxial, visible red laser
Measurement range	0.5 - 50 m
Laser class	2
Laser type	650 nm; < 1mW
Ø laser dot (at distance)	10 m: ~7 mm × 7 mm 30 m: ~9 mm × 15 mm

## TIE DISTANCE ACCURACY (3D)

Angle and distance combination	@10 m @30 m @50 m Approx. 1 mm 2 mm 4 mm
--------------------------------	---

## TILT SENSOR

Self-levelling range	±3°
Accuracy	10", equates to 2.5 mm @ 50 m

## OPERATION

Keys/user interface	1 on / off button
Interfaces	USB type B, power supply power pack

## DIGITAL POINT FINDER

Zoom (magnification) /	1× / 3.40 m × 2.14 m
Field of view (@ 10 m)	2× / 1.70 m × 1.07 m 4× / 0.85 m × 0.54 m 8× / 0.42 m × 0.27 m

## CIRUCLAR LEVEL SETTING

Accuracy	1°/mm
----------	-------

\* Accuracy is specified at 20°C; \*\* Depending on environment.



0316 - 843062 en  
Copyright GeoMax AG.  
Illustrations, descriptions and technical specifications are not binding and may change.  
All trademarks and trade names are those of their respective owners.



## COMMUNICATION

Cable	USB: Micro-B USB and type a; WLAN
Wireless	50 m range **

## POWER SUPPLY

Internal battery	Li-Ion battery 14.4 V / 63 Wh
External power	24 VDC / 2.5A, charging time 8 h
Operating time	8 h

## PHYSICAL SPECIFICATIONS

Dimensions	Height 215.5 mm, Ø 186.6 mm
Weight	2.8 kg
Operating temp.	- 10°C to 50°C
Storage temp.	- 25°C to 70°C
Protection class	IP54 (IEC 60529)
Attachment	5/8" thread

## REMOTE CONTROL

Range	50 m **
Communication	Infrared (IR)
Battery	1 AA, 1.5 V



At GeoMax, we provide a comprehensive portfolio of integrated solutions by developing, manufacturing and distributing quality construction and surveying instruments and software.

Our products are known for robustness, ease of use and outstanding price-to-performance ratio. From our base in Europe, our technology is supported by a broad sales and service network covering all continents and more than 100 branches.

GeoMax is part of Hexagon (Nasdaq Stockholm: HEXA B; hexagon.com), a leading global provider of information technologies that drive quality and productivity improvements across geospatial and industrial enterprise applications. Know more about us at:

[www.geomax-positioning.com](http://www.geomax-positioning.com)



GEOMAX AUTHORIZED DISTRIBUTION PARTNER

Works when you do